

Maintenance

1. Cleaning the product periodically, be careful of electrical components.
2. Prohibit to wipe the product with chemical thinners and wash it, you can use a soft damp cloth to wipe clean.
3. For your baby's safety, please inspection and maintenance on the vehicle often.
4. Prohibit to change the product's structure and line systems, and it needs professional or technical staff when maintenance.

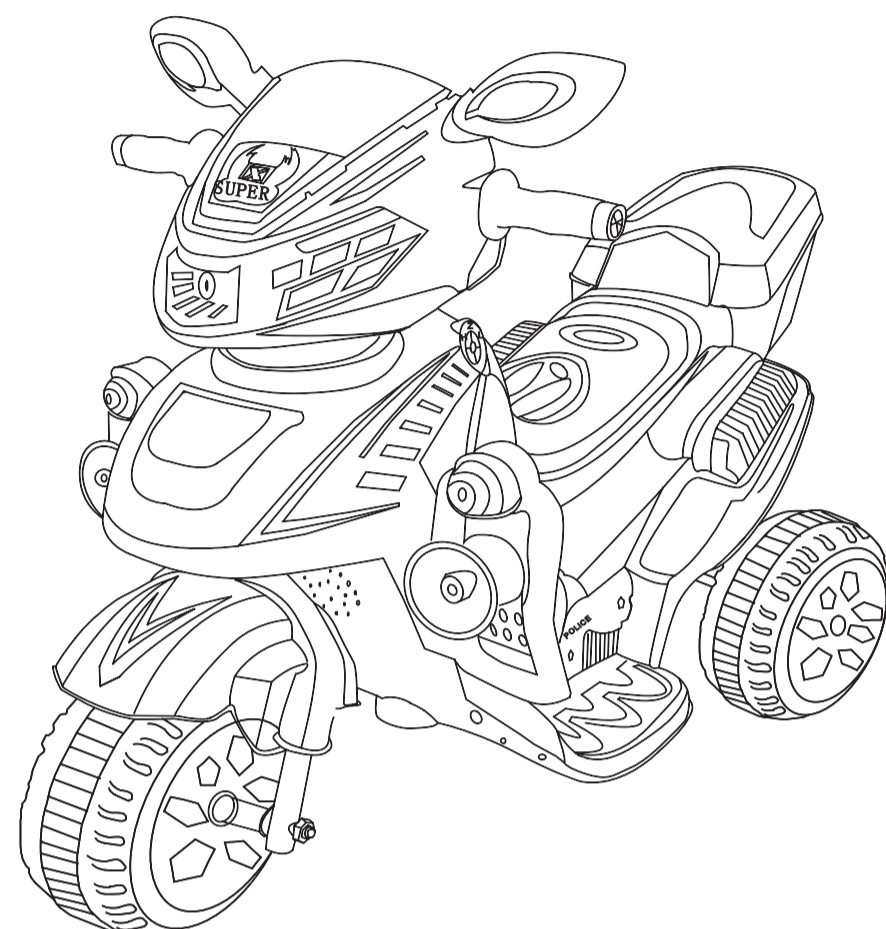
Warning:

- 1.This product is not transport, please do not drive on the road, and it is used under the custody of the adult.
2. This product is prohibited for children under 36 months.
3. This product is prohibited for over-age, overload. Maximum load is 25 kg.
- 4.The vehicle must be installed by adults, and after check and confirmation, it could be use.
5. Prohibit washing the product with water, it only can be wiped clean with a soft damp cloth.
6. Charging operation only by adults, charger is not a toy, so do not let children play it.
7. Prohibit driving on public streets, roads, slopes, stairs, pool and other dangerous driving areas.

At last,thank you for purchasing our products.We will Provide you comprehensive services wholeheartedly. May you and your family live a happy life and your children grow up happily.

Children Electric Tricycle

Please read the operating instructions carefully before using



the company or local sales point to maintenance.

Packing component list

Check whether the parts complete before assemble, if lacked, please contact the company.

Serial number	Name	Quantity
1	Car body	1
2	Head components	1
3	Charger	1
4	Instructions	1
5	Battery	1
6	Certificate	1
7	MP3 audio cable (No MP3 feature without cable)	1
8	Saddle	1
9	Front wheel, fender, Front fork components	1
10	Tool box	1
11	Head components	1
12	Small package (iron cap in the left and right of front wheel) 4 10-pad. 2 Cotter pin. 2 m5*28Round machine screw. 2 M5 Nut	1
13	Front axle	1

Component assembly instructions

1. Install the front wheel fork fender components

1) Penetrate the cotter pin into the hole of the front axle, and use pliers to make it into M shape.2) put on a flat pad; 3) through one side of the hole of the front axle; 4)put on a flat pad; 5)front axle through the wheel holes; 6) put on a flat pad; 7) through one side of the hole of the front axle; 8) put on a flat pad 9); Penetrate the cotter pin into the hole of the front axle, and use pliers to make it into M shape; 10) put on the iron cap of the front wheel and then tighten the round machine screw. (Note that the front wheel iron blocks cap)

Instruction

Thank you for choosing "children happy" children electric car ! "Children Happy" is in pursuit of the excellence at all times, in order to let your children can live through a lively and happy childhood. Children Happy Co. insists on the principle of quality first, credit standing uppermost to ensure each child can regale on high-quality baby carrier products with safety and comfort.

Please read the operating instructions carefully before using this product, it will tell you the correct methods of operation and installation, in order to avoid incorrect operation method damaging the product or injuring your baby. This manual should be in safe keeping and placed where can easy to take.

Main Functions:

- Foot control
- Music, it can play a variety of enjoyable songs
- Lights, headlights and colorful flashing lights
- MP3 amplifier configuration (optional)

Electric Vehicle Specifications

For ages	36-71 months	Temperature range	0℃-40℃
Load limit	Less than 25 kg	Dimensions	92*42*65cm
Speed	3.5 km/h	(assembled) Power mode	Rechargeable
Charger	Input: AC220-240V Frequency: 50-60HZ	Battery	Dry sealed battery
Specifications	Output direct-current DC6V	Specifications	6V4.5AH
Charging time	About 8-12 hours	Battery life	Recharged about 300 times
Motor Specification	RS390-DC6v	Motor Power	12W

product happily and safely for your children, please your patient read.

1. To charge operation, it is must for adult. Do not let children to operate charging, and away from flammable and explosive materials.
2. It is must be under the guardianship and guidance of the adult to use this product, and adults can not leave.
3. This product must be assembled and installed by adults, and before use, please check it carefully whether the assembly and install is correct according to the manual instruction.
4. Make sure children to be in a safe environment, on the smooth hard road to drive. Please do not use this product in bad weather, poor light, vision is not open and where there are obstacles.
5. Prohibit driving on public streets, roads, slopes, stairs, pool and other dangerous traffic areas.
6. Transmission gear of this product is plastic processing products, its maximum load is 25kg. Overload and over the use of age are prohibited.
7. This product is suitable for children 36-71 months, do not allow children under 36 months.
8. Children must be seated when driving, and must wear shoes to prevent feet is pinched.
9. Note that some parts of the product might be damaged because of improper operation. Please take care to use.
10. Prohibit to transform forward and back switch functions suddenly when driving, transforming operation should be in stopped status.
11. After the vehicle is dirty, it only can be wiped with a little wet soft cloth, and it is not allowed to wash with water or use other chemicals.
12. The charger is not a toy, so not allow children to play it. And after complete charging, please pack away it.
13. In order to avoid causing harm to the children, please put the plastic bags and other packaging materials away from children.
14. Prohibit to mix old and new batteries for use. Please do not leave about the used batteries.
15. This product is plastic products, please keep away from fire.
16. When this product is in use, the startup and running of the motor will possibly produce sparks, so prohibit to use in some dangerous areas such as gas stations and flammable or explosive places.
17. Before charging each time, must check whether the shell of the charger, the power

2. Install the head of the vehicle

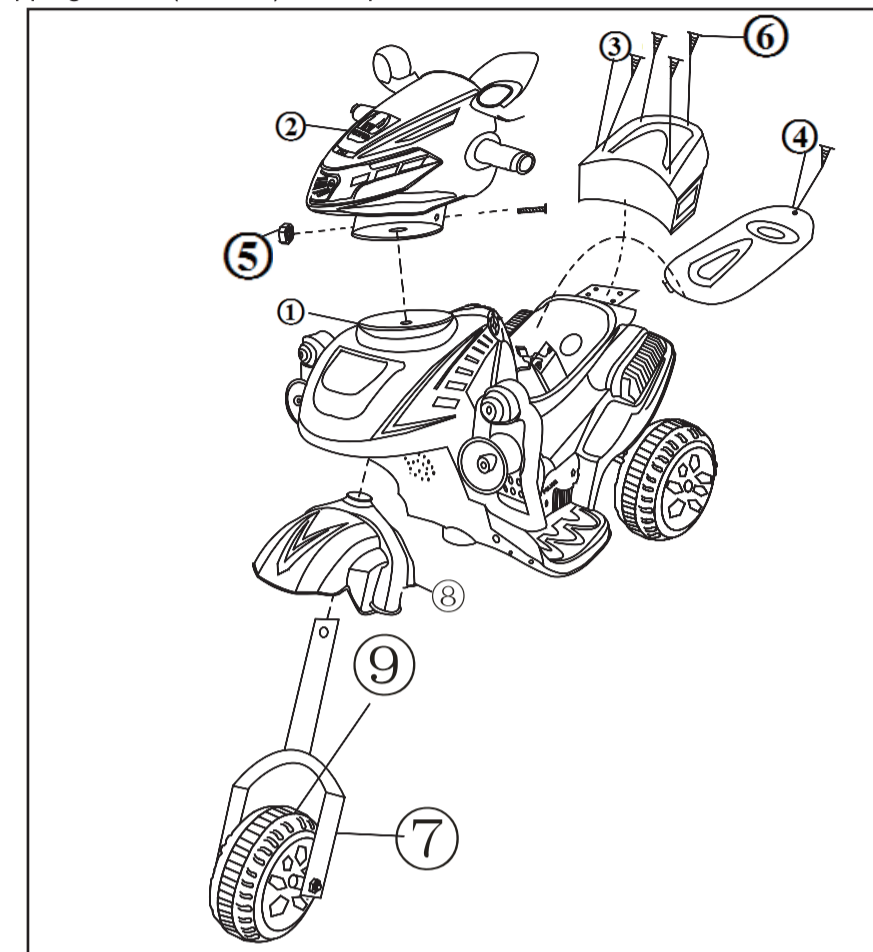
Put the direction rod into the bottom of the hole of the head neck, connect front fork and head with a M5*32 round machine screw. (with pictures)

3. Install the toolbox

Fix the toolbox on the rear of vehicle with four ϕ 4X10 flat head tapping screws. (with pictures)

4. Install seat

Put the seat into the groove of the vehicle body, and then tighten it with a flat head tapping screw.(ϕ 4X10) (with pictures)



Instruction: ① car body ② head components ③ backrest ④ toolbox
⑤ nut ⑥ rearview mirror ⑦ hubcap ⑧ lock ⑨ wheel

wire of output and plug are damaged, if there are damage, please do not use it.
18. The product packaging contains important, please be retained..

Common Fault Resolution

Bad conditions	Check Focus	Fault Resolution
The vehicle is unable to exercise	1.The battery outlet plug is not connected.	1.Connect the plug connector.
	2.The switch status is at the stopping position.	2.Adjust the switch status to the required functional location.
	3.The fuse is blown.	3.Change a fuse.
	4.The battery voltage is too low.	4.Charge the battery fully.
	5.Battery damaged.	5.Change a battery.
	6.Motor damaged.	6.Take it to maintenance station to maintain.
	7.The electric equipment damaged.	7. Take it to maintenance station to maintain.
The vehicle moved slowly	1.The battery is not charged enough.	1.Recharge the battery(8-12 hours)
	2.The battery is old.	2.Change a battery.
	3.Overload	3.Reduce the burden to under 25kg
	4.The road is not flat.	4.Driving on the flat road.
Charging is unable	1.Charger damaged.	1.Detecting whether the no-load voltage is about DC9V.
	2.Battery damaged.	2.Exchange charger or battery.
	3.The charger is whether a good contact at both ends.	3.Check the charger connected with the household power supply.
	4.Charging socket damaged.	4.Exchange charging socket.
	5. The fuse is blown.	5.Exchange fuse.
There are abnormal sound when driving	1.The gears in gearbox are damaged.	Check the transmission gear is whether damaged, if damaged, please replace the gear. clean up the garbage outside the wheel.
	2. There are too many sand stucked to the wheels.	

When above fault resolution methods are not available for the clients, please contact