

| problem | problem part | how to fix |
|--|---|--|
| motor cannot run | 1. fuse overload?(in the fuse box under the seat) 2. pedal switch loose? 3. motor terminal loose? 4. motor lead loose? 5. connect motor directly to the battery, is it running? | 1. yes, fuse will power off 15-20sec, then start again; no, next step 2. reconnect pedal switch 3. reconnect motor terminal 4. reconnect motor lead 5. if not running, please contact with supplier for help |
| only forward or backward | 1. forward/backward switch broken or not? 2. motor connecting line loose? | 1. change new forward/backward switch 2. yes, reconnect; no, driving circuit board broken, please contact with supplier for help |
| speed very slow | 1. battery voltage normal? 2. connect motor directly to the battery, speed faster? | 1. no, recharge 2. yes, driving circuit board broken, please contact supplier for help |
| cannot charge | 1. battery connector loose? 2. is charger heat when charging? | 1. yes, reconnect 2. no, charger broken, change a new one |
| car can move, but no music and light | 1. misic and light switch broken? 2. the line from battery and car head loose? | 1. yes, change a new one 2. yes, reconnect |
| wheel runs, car cannot move | 1. driving motor running? 2. gear box broken? | 1. yes, let car run 2. yes, change a new one |
| car run and stop alternately | 1. player overweight 35kg? 2. ground rugged? 3. wheel runs smoothly? | 1. yes, weight is not over 35kg 2. yes, please play on the even ground 3. no, wheel or axle broken, please connect with supplier for help |
| if you cannot solve these problems, please contact with supplier | | |

GUIDE BOOK



Please read carefully before assembling
Please keep it properly for your reference

Warning

- Small parts included, under 36months is forbidden to use.
- Product should be assembled by adults.

About product

Thanks for choosing our product. In order to avoid hurting you and your child, please read carefully before assembling. And keep it properly for future reference.

Parameter

Suitable age: 37-96months

Capacity: 35kg

Battery: 12V7AH*1,12V10AH*1

Size: 142x80x69cm

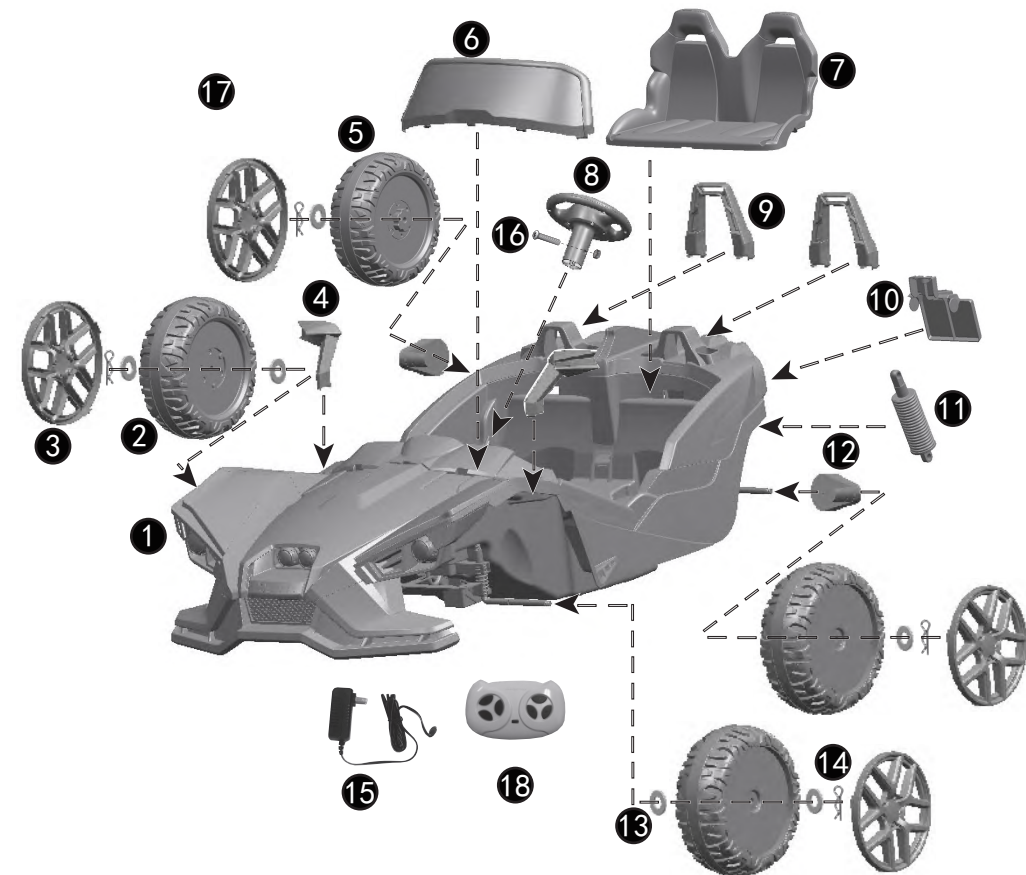
Charging time: 8-12hours

Speed: 3-4km/h

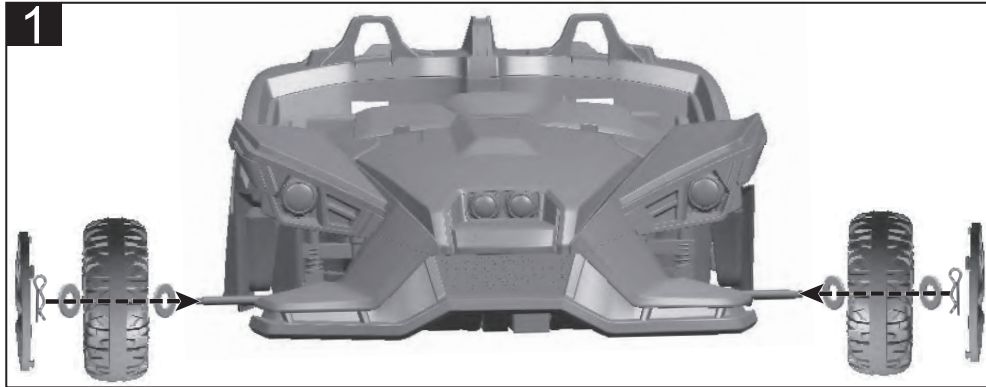
Charger::Input AC220V Output DC12V1000mA

Warning!

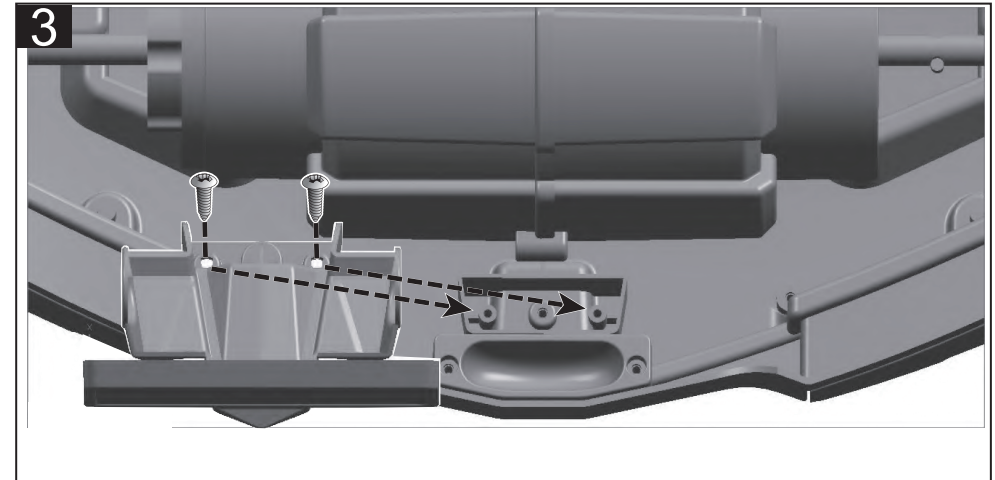
- It should be assembled by adults.
- Please handle bags properly in order to avoid suffocation
- Including small part, not suitable for age under 3 to play.
- It requires skill, please be careful when you play.
- It is not traffic toy, adults' supervision is a must.



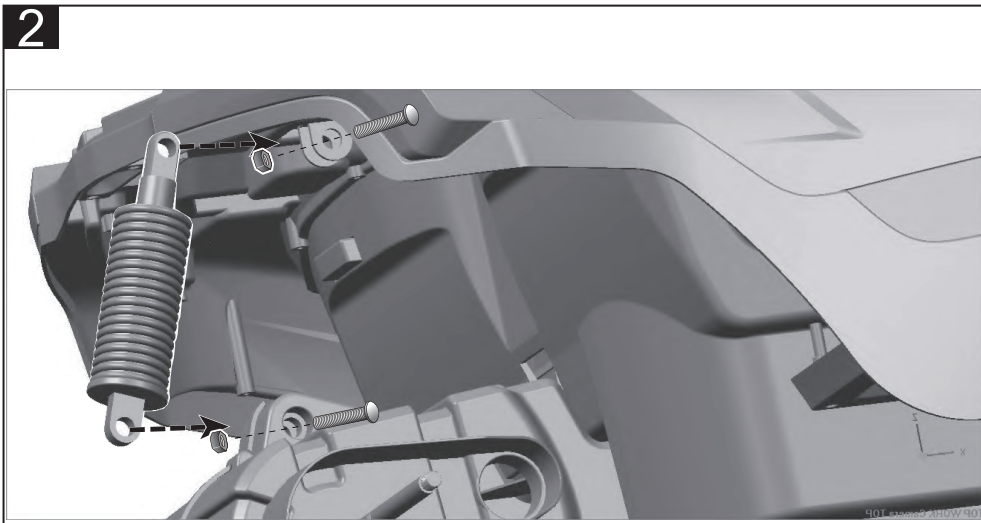
| No. | Part name | Qty | No. | Part name | Qty |
|-----|-----------------|-----|-----|----------------|-----|
| ① | Car body | 1 | ⑩ | Plate number | 1 |
| ② | Front wheel | 2 | ⑪ | suspension | 1 |
| ③ | Wheel cover | 4 | ⑫ | Driving motor | 2 |
| ④ | Rearview mirror | 2 | ⑬ | Gasket | 6 |
| ⑤ | Rear wheel | 2 | ⑭ | Cotter | 4 |
| ⑥ | Window screen | 1 | ⑮ | Charger | 1 |
| ⑦ | Seat | 1 | ⑯ | Screw | 2 |
| ⑧ | Steering wheel | 1 | ⑰ | Guide book | 1 |
| ⑨ | Guide plate | 2 | ⑱ | Remote control | 1 |



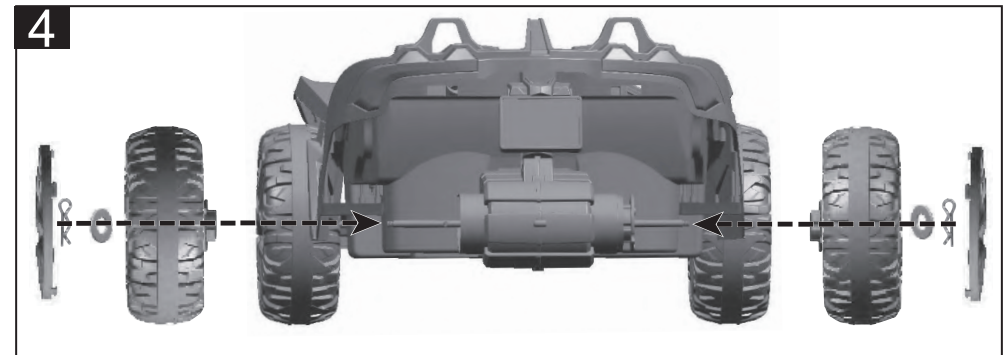
1. step by step: gasket, front wheel, gasket, cotter, wheel cover.



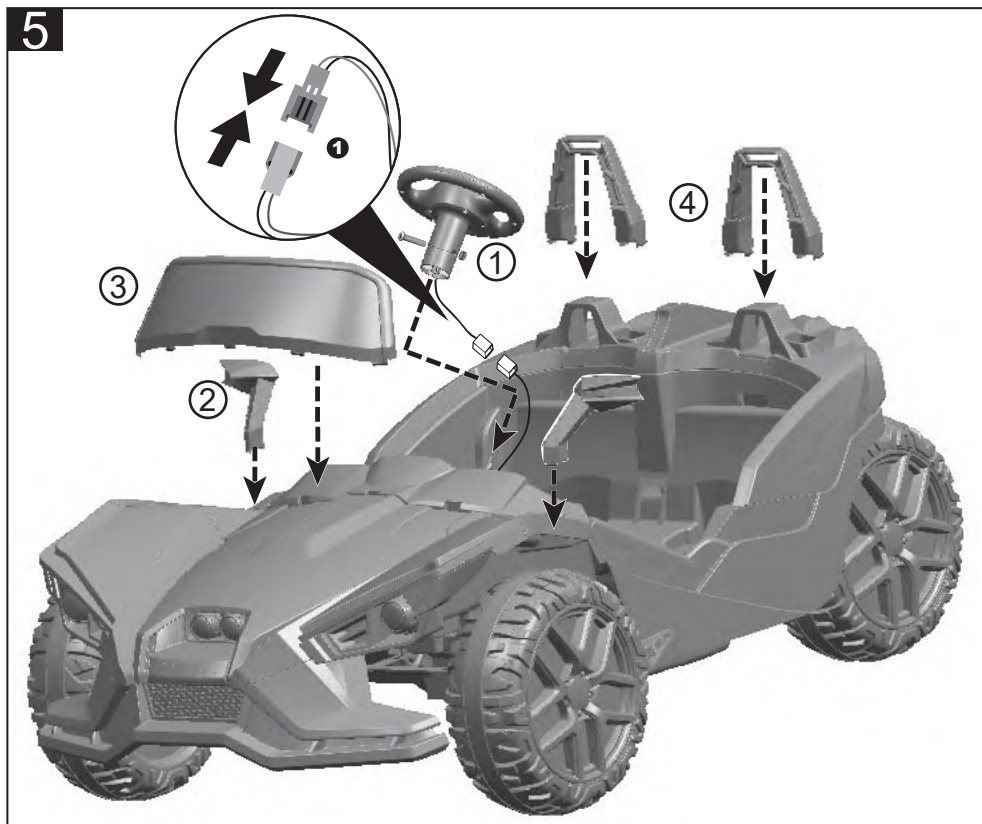
3. assembling plate number: turning the car over, putting it the right place, then using two screws to tighten.



2. assembling spring: putting it in the right place, then using two screws to tighten.



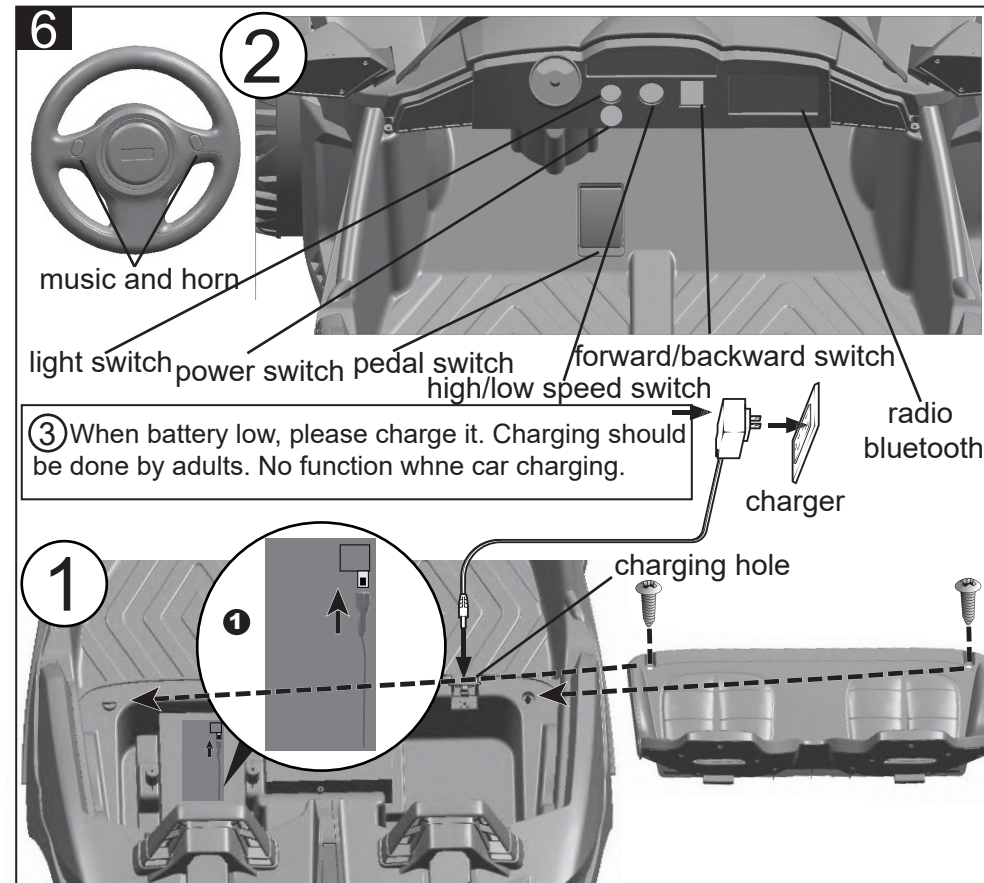
4. step by step: rear wheel, gasket, cotter, wheel cover.



5. How to assemble:

- ① Connecting steering wheel line and platform line, then inserting steering wheel into the platform, using screw to tighten.
- ② Inserting rearview mirror to the right place.
- ③ Inserting window screen to the right place.
- ④ Inserting guide plate to the right place.

Remote control: S means adjusting speed, one press one speed. One light is slow speed, two light is middle speed, three light is fast speed. ↑ means forward, ↓ means backward, ← means turning left, → means turning right, P means stop. Press one time, car stop, all red light will turn on, press again, car will run.



- ① ① Connecting battery line, then putting seat into the right place, using two screws to tighten.
- ② Turning on power, then control each button to play.



How to use 2.4G remote control
 1: R/C needs 2pcs no. 7 batteries
 2: Turning off power
 3: Press ↑ and ↓ buttons at the same time, when red light flickering, turning on power, if red light stops flickering, frequency adjustment is finished, you can control the car by R/C