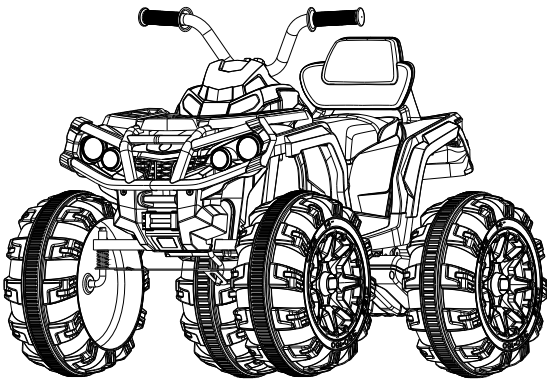



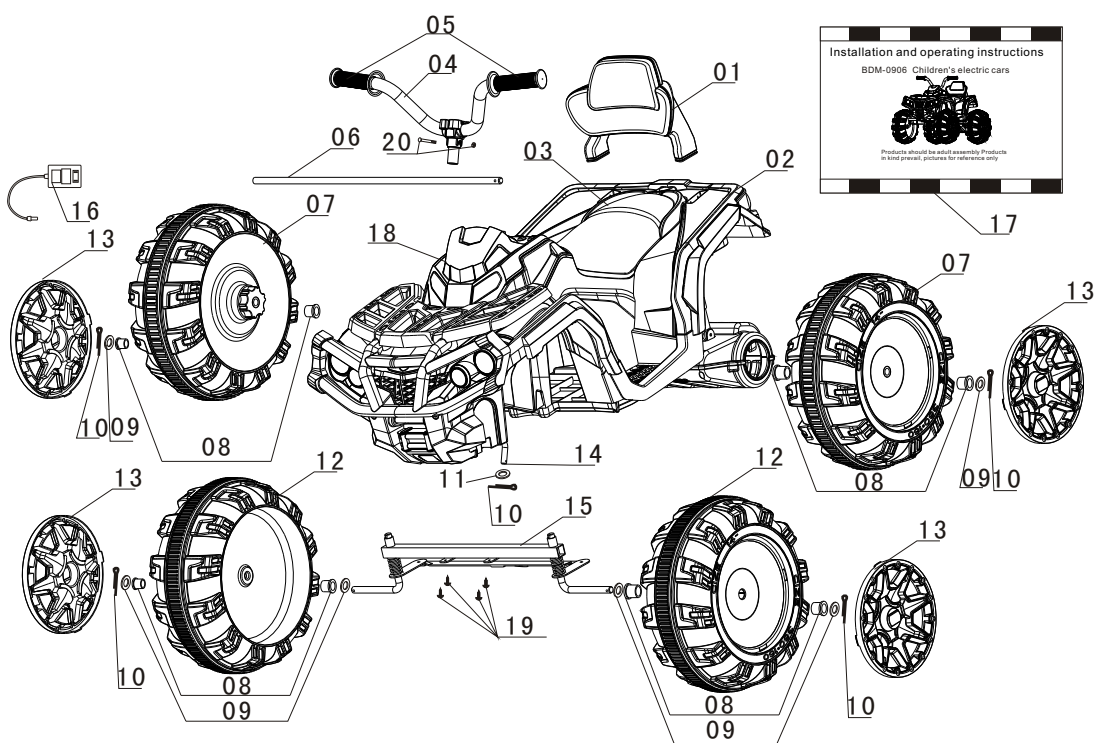
<p>Executive standard :En71 and En62115 ASTM F963-11 GB6675.1-2014 GB6675.2-2014 GB6675.3-2014 GB6675.4-2014 andGB19865-2005</p>	<p>Installation and operating instructions</p> <p>BDM-0906 Children's electric cars</p>  <p>Products should be adult assembly Products in kind prevail, pictures for reference only</p>
<p>Warm prompt</p> <p>The illustrations in this manual in order to indicate the operation method of the product and product structure,if there is a few differences between physical and picture, please in kind prevail.</p> <p>In order to improve the quality,in the circumstance that not to be told,we may change the part of structure and appearance of the product, please understand.</p> <p> Please read the instructions carefully before using, he will tell you the right operation method and the installation program, in order to avoid incorrect operation to damage product or hurt your child, pleasestakekeeping this manual and put where get it easy.</p>	<p>Maintenance</p> <ul style="list-style-type: none"><li>●To prevent your baby from accidental injury, please inspect and maintain the car regularly.</li><li>●Please check if the attached components are complete, and please don't hesitate to contact us ASAP if find loss of quantity.</li><li>●Regularly check existence of any loose screws and damaged parts.</li><li>●Each component should be checked before installation or use,</li><li>●As for disassembly, please operate carefully in accordance with the manual, thus to avoid unnecessary damage.</li><li>●Please regularly check if the product and the charger are in good conditions, if any wires, plugs, and housings are damaged; any damaged should be replaced and repaired to intact.</li><li>●The product should be periodically cleaned, and please do not clean it with water thus to avoid any damage to electric elements; the product should be cleaned with a dry cloth.</li></ul>

<div>Using the matters needing attention</div> <div>1. Before use, please check whether the parts installed and fastening connection before using. 2. Do not use in the street, the road, slope, gully ect of the danger zone. 3. Please don't use in smooth surface, such as marble, floor tile and so on. 4. Don't turn on run forward and backward switch during using, be careful not to let children stand on the seat. 5. Do not change local line and the additional electric device. 6. Remote control and electric cars will not be let it get wet in the rain or in the water use, do not pour water or other liquids in the car or other ways to flooding and stay away from fire, avoid to cause damage. 7. Electric cars stop running during run into obstacles,please run again after leaving obstacles. 8. Do not use indoors, in order to avoid damaged furniture and even kids wrestling. 9. When remote control battery appears insufficient, vehicle can only go forward instead of goingleft-right direction, remote control distance is short, jitter etc. Please replace the battery immediately! 10. when light battery is low, vehicle will appear without audible and visual function, please replace battery immediately 11. When not in use, please turn off the power switch, not use for a long time, please unplug the power plug and socket. 12.This product is limited to a person, do not overload, maximum weight of 30 kg</div> <div>16※ Note: this specification of the product pictures and function, is for reference only, in kind prevail 。</div>	<div>Directory</div> <div>directory.....01 The specification.....02 Parts Instruction.....03-04 Installation instruction.....05-07 Directions for use.....08-10 Troubleshooting.....11-12 Warning.....13 Instructions for using of battery of remote control.....14 Charging matters needing attention.....15 Using the matters needing attention.....16 Maintenance.....17</div> <div>01</div>																				
<div>Specification</div> <table><tr><th>Name</th><th>Specication</th></tr><tr><td>Battery and fuse</td><td>Double drive(12V7AH) (Recoverable fuse: 15A)</td></tr><tr><td>Motor</td><td>Double drive12V 12V(vees)</td></tr><tr><td>Suitable age</td><td>37-96 months</td></tr><tr><td>Maxweight</td><td>30KG</td></tr><tr><td>Packing size</td><td>1030*670*730mm</td></tr><tr><td>Speed</td><td>3-6KM/h</td></tr><tr><td>Hours of use</td><td>Charging8-12hours, using 1 to 2 hours</td></tr><tr><td>Charger</td><td>Input: 220V Output : DC12V1000MA</td></tr><tr><td>Mainmaterial</td><td>PP (polypropylene) iron</td></tr></table> <div>02※ Specified above parameter matching for the customer, specific parameters please refer to our samples.</div>	Name	Specication	Battery and fuse	Double drive(12V7AH) (Recoverable fuse: 15A)	Motor	Double drive12V 12V(vees)	Suitable age	37-96 months	Maxweight	30KG	Packing size	1030*670*730mm	Speed	3-6KM/h	Hours of use	Charging8-12hours, using 1 to 2 hours	Charger	Input: 220V Output : DC12V1000MA	Mainmaterial	PP (polypropylene) iron	<div>Charging matters needing attention</div> <div>●In using electric vehicles for the first time, must ensure that the battery charging full 12 hours, otherwise will permanently damage battery and never recover. ●When charging, insert the plug of the charger DC charging hole, then the charger plug in the power supply plug seat. ●One hour each use, must be timely charging, normal charging time is 8 to 12 hours, and shall not exceed 20 hours per charge time. ●In the process of charging the charger and battery have fever phenomenon (60 °C) are normal. ●If the water is not charging connector, otherwise may cause short circuit. ●The electric car must use local car equipped with the charger and battery, so as not to damage the charger and battery or electric circuit. ●When the electric conductor will not be used for a long time, must to charge at least monthly.</div> <div>15</div>
Name	Specication																				
Battery and fuse	Double drive(12V7AH) (Recoverable fuse: 15A)																				
Motor	Double drive12V 12V(vees)																				
Suitable age	37-96 months																				
Maxweight	30KG																				
Packing size	1030*670*730mm																				
Speed	3-6KM/h																				
Hours of use	Charging8-12hours, using 1 to 2 hours																				
Charger	Input: 220V Output : DC12V1000MA																				
Mainmaterial	PP (polypropylene) iron																				

Instructions for using of battery of remote control

- All batteries should be in the correct polarity insert
- Must be rechargeable battery charging, from toys to retrieve run out of battery.
- A mixture of old and new or different types of batteries.
- Power terminal short circuit.
- Rechargeable batteries can only be charged under adult supervision.
- Rechargeable batteries should be removed from the toy before charging.

Parts Instruction



Parts Instruction

No	name of parts	Qty	No	name of parts	Qty	No	name of parts	Qty
01	Back rest	1	11	M10 gasket	1	21		
02	Car Body	1	12	front wheel	2	22		
03	Seat	1	13	Wheel cover	4	23		
04	Hand	1	14	Direction of rod	1	24		
05	Hand set	2	15	Front axle	1	25		
06	After the shaft	1	16	Charger	1	26		
07	rear wheel	2	17	Instructions	1	27		
08	Shaft sleeve	8	18	Car instrument	1	28		
09	M12 gasket	6	19	Front axle fixed screw	4	29		
10	2.5 * 16 split pin	5	20	Hand the fixed screw nut	1	30		

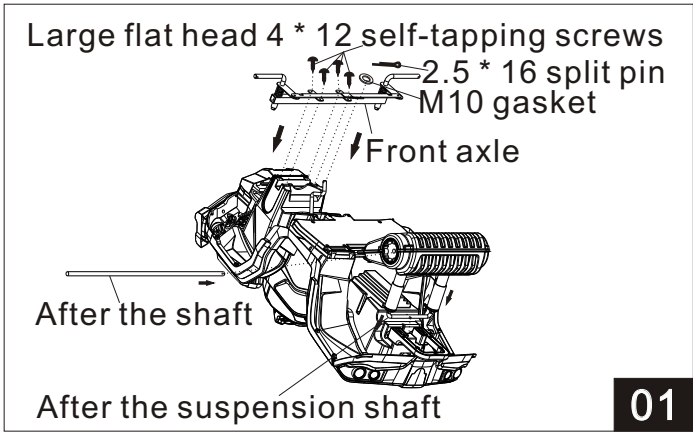
Warning

- For your baby safe driving, you must pay attention to the following warning:
- product assembly and adjustments should be carried out by the adult, please keep the children away from moving parts.
  - Contains small parts, not suitable for children under 36 months and use!
  - Children ride, it must be the correct use of seat belts.Keep away from fire!
  - Children must use this product under the guidance of adults, and caregivers in use process shall not be allowed to leave!
  - Do not let the children on the foot pedal (or electric) standing or play.
  - Battery charging should be carried out by the adult.
  - Before using this product, please recharge!
  - In order to avoid harm the children, please pack material such as plastic bags away from children!
  - To ban the use of the manufacturer to provide any accessories.Do not use the charger as a toy.
  - Default of maximum load weight 30 kg and shall not be overloaded.
  - Default of applicable age range: 37-96 months.
  - Toys can't connected to more than the recommended number of power supply.
  - When the vehicle in charge, operating toys (vehicle).

Troubleshooting

Charging a slight noise and fever	1.Belongs to the chemical reaction	Normal
Slow speed	1.The old battery 2.batteries 3.overload  4.The road is not flat	A new battery To give a full charge Reduce weight to less than 25kg to level off the ground
gear box with big noise	1.The gear is broken	Health maintenance
Tooth in the process of car travel	1.The motor cable poor contact 2.Dead center on motor	Health maintenance Go to the health maintenance
The car still silent	1.The steering wheel connector is not inserted	According to the instruction manual connection
The car is not to stop	1.Electrical appliances	Health maintenance

installation instructions

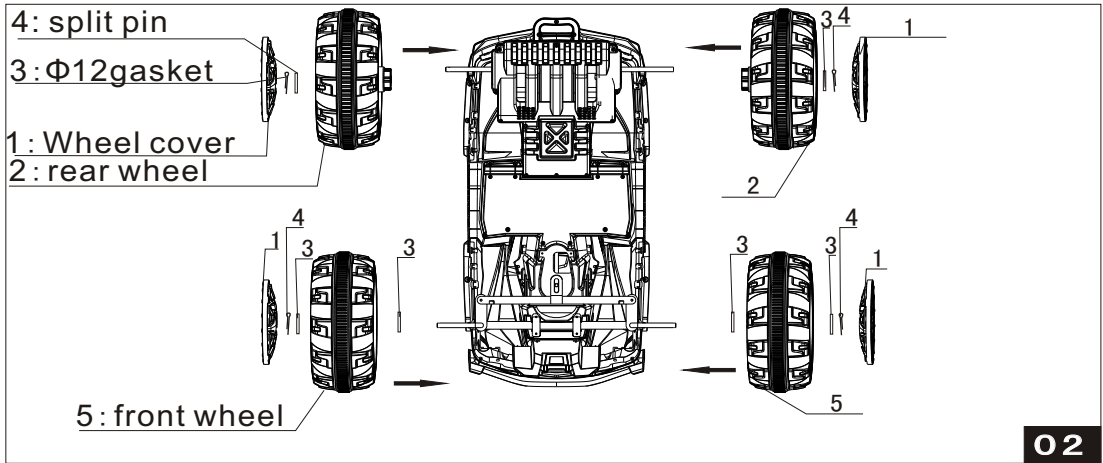


1. Install the front axle and wheel (see figure after 01)
- A. find front axle of good position with four 4 \* 12 big flat head straight tapping screw fixed (note that direction hole will aim to put a in the direction of the stem to M10 gaskets, with 2.5 \* 16 splint fixed well. (see FIG. 01)
- B. after the first shock shaft as shown in figure 01, after the good location positioning pin gaps of good body, forcibly press card and put in place, find axles for good position as shown in FIG. 01 position after insert in place. (that is, both sides to keep the same length)

12

05

installation instructions



2. Install the front and rear wheel (see figure 02) **Double drive**
- A: installing the front wheel: first put A M12 in both sides on the front axle of gaskets, respectively in the two front wheel installed on the front axle, and then the wheel lateral put A gasket M12 finally pressed the cotter pin with good tools fixed splint.
- B: the installation of the rear wheel: the back wheel left and right sides is fitted with a driving wheel, lateral medial (convex tooth and gear box) and then on each side to put on a M12 pads and then insert the cotter pin rear wheel axle hole. With good tools fixed splint.
- C: the last four wheel cover good place card close to the wheels.

Troubleshooting

Fault type	Reason analysis	Elimination methods
The car did not move	1.The battery voltage is too low 2.Electrical protection 3.Switch is not receiving the correct position 4.Fall off the battery connectors 5.The battery is broken 6.Electrical appliances 7.The motor is broken	For a full charge Stop using the instructions according to the function in a few minutes To replace new battery Go to the health maintenance Go to the health maintenance
Battery is not into electricity	1.Connector on the batteries fall off 2.The charger without electricity 3.The charger is broken	To reconnect To insert Root replacement charger
Short range	1.The battery didn't charge 2.The battery is broken	To give a full charge More bad battery

06

11



<div data-bbox="457 973 726 1009" data-label="Section-Header"><h3>Directions for use</h3></div> <div data-bbox="174 1020 1029 1403" data-label="Text"><p>4.forward/reverse control, speed control and music method of use: Driver sit back, press the power switch, the car instrument lights up and start the sound (2-5 seconds), and to put forward, stop, reverse switch position "forward" (i.e., according to the forward), high speed switch "position" at low speed, stepping on foot switch, the low speed of the car, loosen the pedal, the car. High speed switch position of "high-speed" stepping on foot switch, the speed of the car, loosen the pedal, the car. Forward/backward switch "backward position", stepping on foot switch, high speed car back, loosen the pedal, the car. High speed switch setting "idle position" on the pedal car slow retreat, loosen the pedal, the car. Forward/reverse switch "middle stop position" on foot, the car can't run. MP3 utility player can play music, press the button will play different music. "V +" long press to add volume."V -" long press to decrease volume. Left and right steering wheel control direction. The press of a button on the steering wheel different sounds.(TF card when used to cary now build folder, the folder name to MP3 multi-functional players to the corresponding button under the name, press the corresponding button to play the music in this folder.)</p></div> <div data-bbox="174 1501 235 1540" data-label="Text"><p>10</p></div>	<div data-bbox="1304 955 1663 991" data-label="Section-Header"><h3>installation instructions</h3></div> <div data-bbox="1167 1012 1793 1350" data-label="Image"></div> <div data-bbox="1092 1359 1892 1501" data-label="List-Group"><p>4. Install the handle and the back of a chair (see figure 4) A. install handle as shown in figure 4, put the hand on location in the direction shown by the arrow direction on the rod, and install in place, with the screw nut can be fixed. B. back after installation As shown in figure 4, will be back to the good location, after hard card and in the direction shown by the arrow in place.</p></div> <div data-bbox="1864 1501 1915 1540" data-label="Text"><p>07</p></div>
<div data-bbox="472 1561 743 1596" data-label="Section-Header"><h3>Directions for use</h3></div> <div data-bbox="224 1626 676 2041" data-label="Image"></div> <div data-bbox="684 1688 1035 1923" data-label="List-Group"><p>1. Battery charging: (see figure 01) When the battery is insufficient, please promptly to the battery. The charging jack on the car is behind the center location. (note: toys not operating charging condition. Charge should be charged under adult supervision) rechargeable batteries should be removed from the toy.</p></div> <div data-bbox="174 2101 235 2142" data-label="Text"><p>08</p></div>	<div data-bbox="1339 1567 1610 1602" data-label="Section-Header"><h3>Directions for use</h3></div> <div data-bbox="1064 1620 1367 1837" data-label="Image"></div> <div data-bbox="1381 1641 1904 1739" data-label="List-Group"><p>2. The use of recoverable fuse: (see figure 02) Recoverable fuse when the current more than 15 of a will automatically cut off the power supply 5-10 seconds can be automatically restored. [Optional]</p></div> <div data-bbox="1092 1881 1837 2089" data-label="Image"></div> <div data-bbox="1864 2101 1915 2142" data-label="Text"><p>09</p></div>